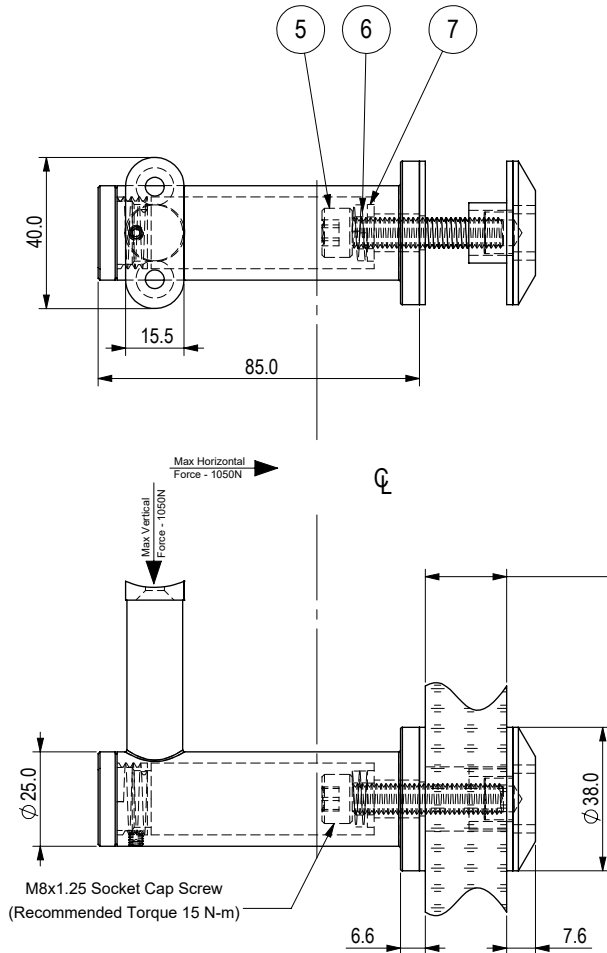


REV.	DATE	DESCRIPTION	DARWN BY	CHECKED BY
0	2021-10-25	INITIAL RELEASE - eCommerce	VK	KW

This Handrail Fitting meets the requirements of the National Building Code of Canada 2015, Div B, Section 3.4.6.5.
Allowable loads are for distance between fittings of up to 1.5m.

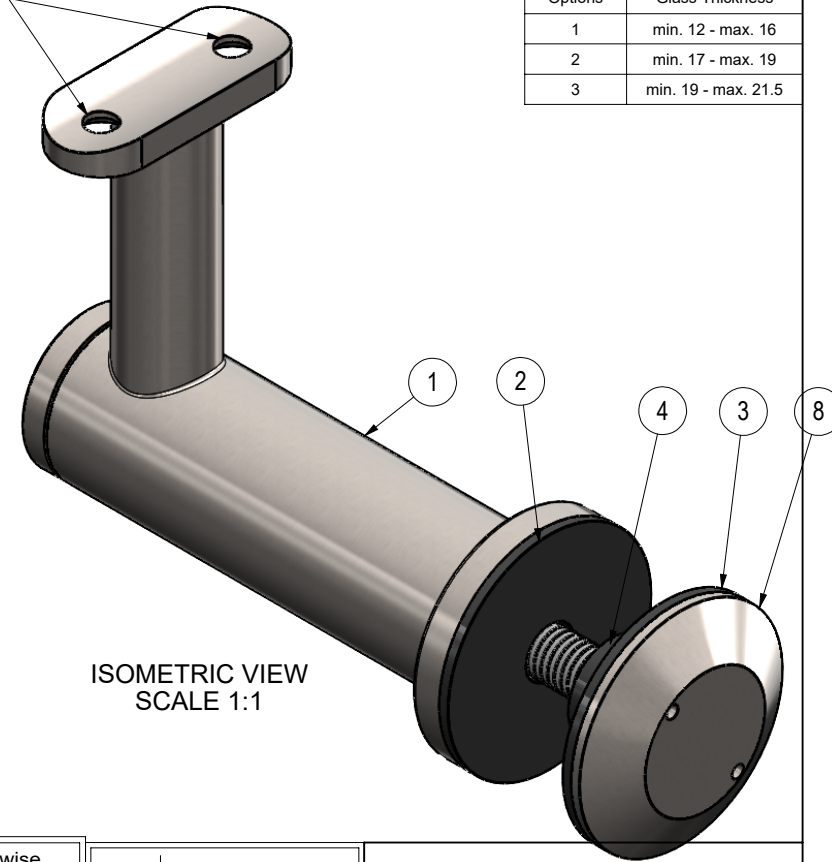


Glass Thickness Range 12-21.5mm
Hole in glass:
min. ϕ 15.9mm [ϕ 5/8"]
recommended ϕ 19.1mm [ϕ 3/4"]
max. ϕ 25.4mm [ϕ 1"]

ITEM	PART	DESCRIPTION	MATERIAL	FINISH	QTY.
1	BA02-SA01.1	HANDRAIL FITTING	Gd 316 SS	SATIN	1
2	BA02-P13	GASKET, 39 mm OD x 19 mm ID x 1/16" THK	CG608-FIBER-GREY	EX WORKS	1
3	BA02-P14	GASKET, 39mm OD x 12 mm ID x 1/16" THK	CG608-FIBER-GREY	EX WORKS	1
4	BA02-P05b	FERRULE 15.9 OD, 11.9 ID x 11.5 LG	NYLON BLACK	EX WORKS	1
5	SHCS - M8	M8 SOCKET HEAD CAP SCREW M8 (LENGTH VARIES)	A2 - 70	EX WORKS	1
6	W M8	LOCK WASHER M8	A2-70	EX WORKS	1
7	FW M8	FLAT WASHER M8 x 16 OD	A2-70	EX WORKS	1
8	BA02-P12	TAPERED FRONT PLATE	Gd 316 SS	FINE MACHINED	1

#10 Rail Screws
(B.O.)

Glass Options	
Options	Glass Thickness
1	min. 12 - max. 16
2	min. 17 - max. 19
3	min. 19 - max. 21.5

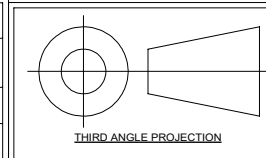


ISOMETRIC VIEW
SCALE 1:1

NOTES:

- All dimensions are in millimeters unless otherwise specified.
- Loctite Type 243 all threads during site installation (B.O.)
(To increase curing speed, please apply activator 7649)

General Tolerances (ISO 8062-CT6). (mm) Unless Specified Otherwise									
NOM. DIMENSION	0 TO 10	10 TO 16	16 TO 25	25 TO 40	40 TO 63	63 TO 100	100 TO 160	160 TO 250	250 TO 400
TOLERANCE	±0.26	±0.27	±0.29	±0.32	±0.35	±0.39	±0.44	±0.50	±0.55
ANGLE TOLERANCE: ±0.5°									



ASSEMBLY DRAWING - HANDRAIL FITTING - BA382TSM4G
STELLA GLASS HARDWARE - eCommerce

SCALE
1:2
SKETCH NO.
BA382TSM4G



UNIT 105-8218 NORTH FRASER WAY, BURNABY, BC, V3N 0E9
TEL (604) 231 5892
WWW.STELLAGLASSHARDWARE.COM