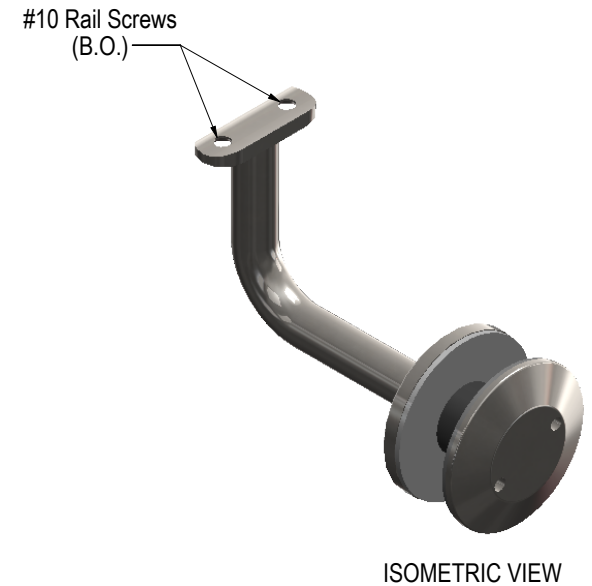
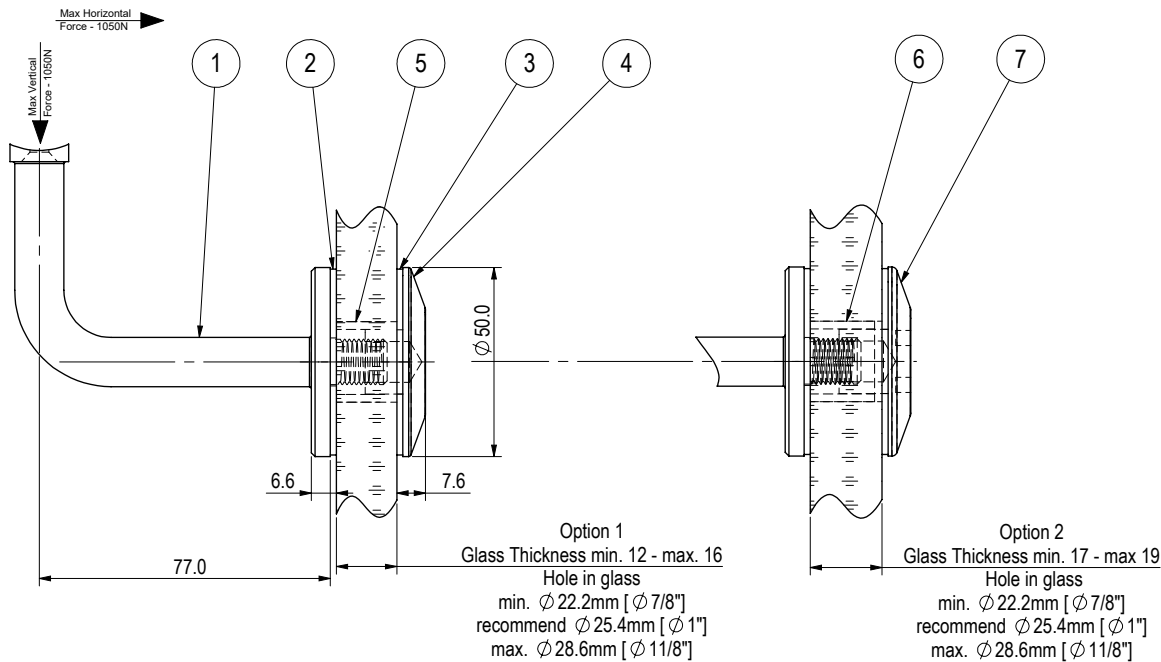


REV.	DATE	DESCRIPTION	DRAWN BY	CHECKED BY
0	20212-10-26	INITIAL RELEASE -eCOMMERCE	VK	KW

This Handrail Fitting meets the requirements of the National Building Code of Canada 2015, Div B, Section 3.4.6.5.
Allowable loads are for distance between fittings of up to 1.5m.

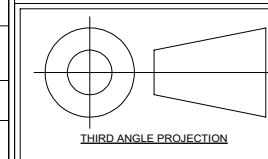
ITEM	PART	DESCRIPTION	MATERIAL	FINISH	QTY.
1	BA03-P01	HAND RAIL FITTING	DUPLEX 2205 SS	SATIN	1
2	NB4-P13	GASKET 1/16" THK.	CG608-FIBER-GREY	EX WORKS	1
3	NB4-P14	GASKET 1/16" THK.	CG608-FIBER-GREY	EX WORKS	1
4	NB4-P01	TAPERED FRONT PLATE	Gd 316 SS	FINE MACHINED	1
5	NB4-P05b	FERRULE BUSHING - 11.5mm LG.	NYLON-BLACK	MACHINED	1
6	NB4-P05b	FERRULE BUSHING - 17mm LG.	NYLON-BLACK	MACHINED	1
7	NB4-P01.1	TAPERED FRONT PLATE EXTENDED NECK	Gd 316 SS	FINE MACHINED	1

Glass Options	
Options	Glass Thickness
1	min. 12 - max. 16
2	min. 17 - max. 19



NOTE:
#10 Railing Screws not included

General Tolerances (ISO 8062-CT6), (mm) Unless Specified Otherwise									
NOM. DIMENSION	0 TO 10	10 TO 16	16 TO 25	25 TO 40	40 TO 63	63 TO 100	100 TO 160	160 TO 250	250 TO 400
TOLERANCE	±0.26	±0.27	±0.29	±0.32	±0.35	±0.39	±0.44	±0.50	±0.55
ANGLE TOLERANCE: ±0.5°									



ASSEMBLY DRAWING - HANDRAIL FITTING - BA503TSM5G
STELLA GLASS HARDWARE - eCOMMERCE

SCALE
1:2
SKETCH NO.
BA503 - G



UNIT 105-8218 NORTH FRASER WAY, BURNABY, BC, V3N 0E9
TEL (604) 231 5892
WWW.STELLAGLASSHARDWARE.COM