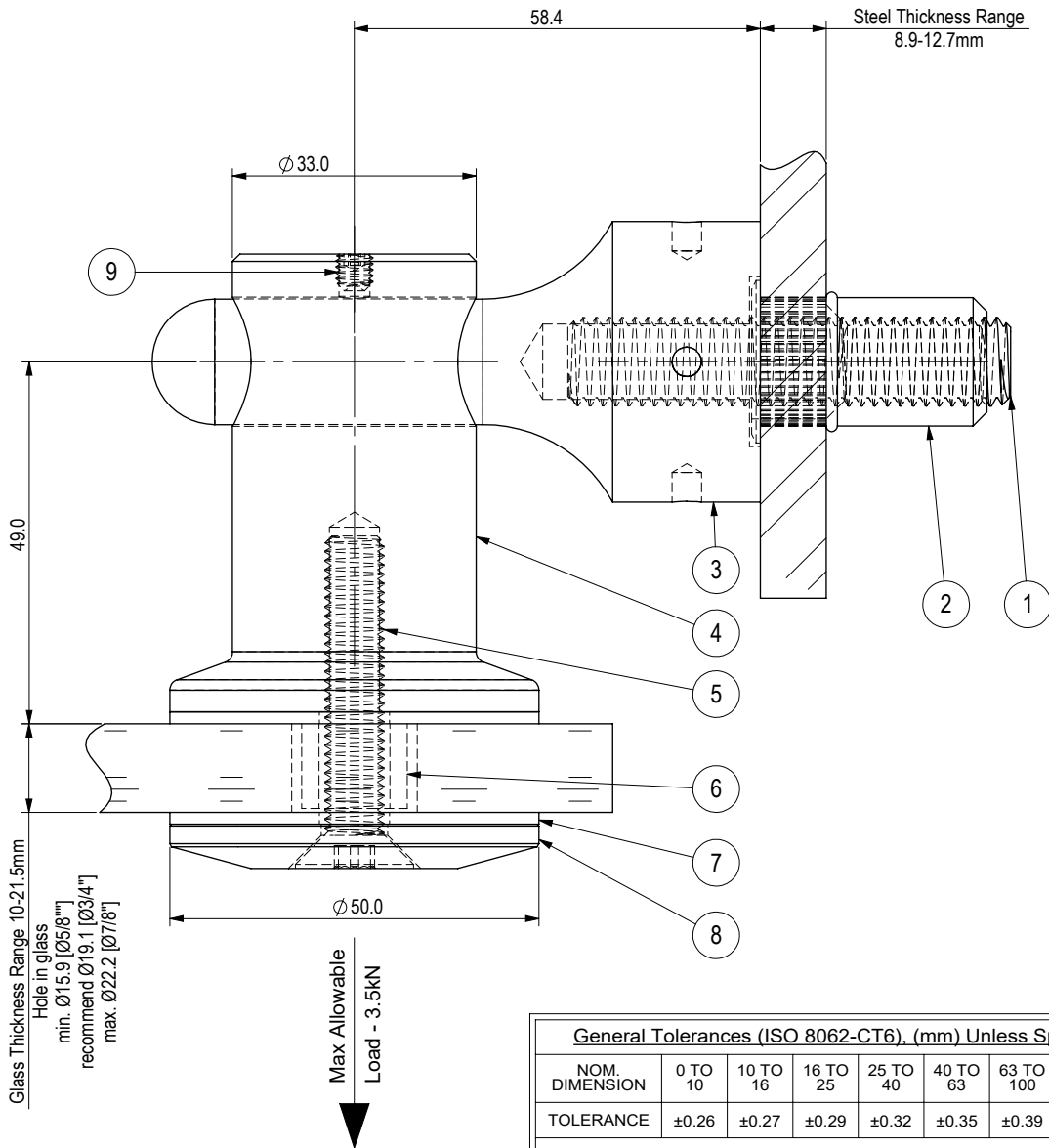
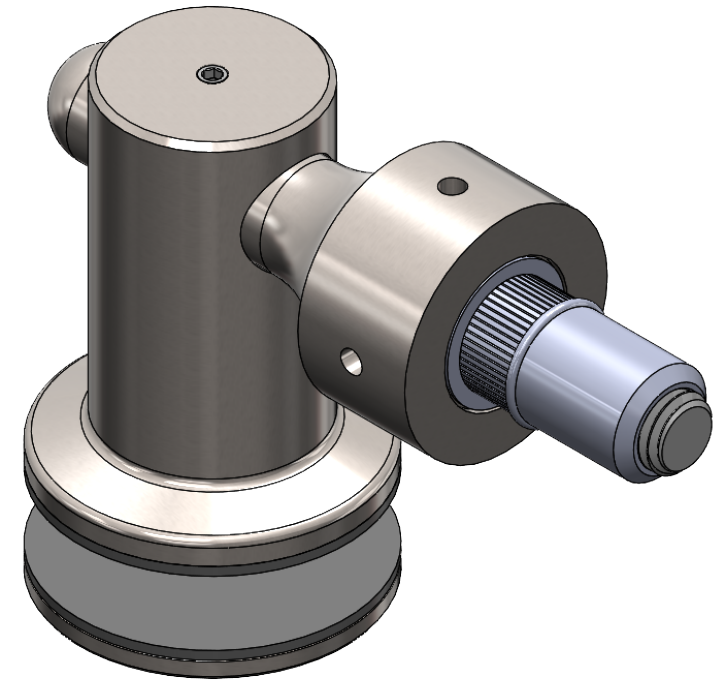


REV.	DATE	DESCRIPTION	DARWN BY	CHECKED BY
0	2021-11-08	INITIAL RELEASE - eCOMMERCE	VK	KW



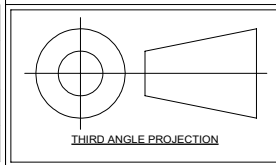
ITEM	PART	DESCRIPTION	MATERIAL	FINISH	QTY.
1	St M12	STUD, M12 (LENGTH VARIES)	A2-70	EX WORKS	1
2	NU M12-12.7	NUTSERT M12-12.7	STEEL 1010/1008	EX WORKS	1
3	DP2-P01	PIN CONNECTOR	Gd 316 SS	MACHINED	1
4	DP9-P02	DOC CONNECTOR	Gd 316 SS	MACHINED	1
5	FHCS M8x45	FLAT HEAD SOCKET CAP SCREW, M8 X 45 Lg.	A2-70	EX WORKS	1
6	NB4-P05a	FERRULE	NYLON BLACK	MACHINED	1
7	NB1-P03	GASKET-1/16" THK.	CG608-FIBER-GREY	EX WORKS	2
8	NB1-P01	Dia 50 FRONT PLATE	Gd 316 SS	MACHINED	1
9	SSS M5x5	SET SCREW-HEX SOCKET- M5 X 5	A2-70	EX WORKS	1



ISOMETRIC VIEW

- NOTES:**
- All dimensions are in millimeters unless otherwise specified.
  - Loctite Type 243 all threads during site installation (B.O.)  
(To increase curing speed, please apply activator 7649)

General Tolerances (ISO 8062-CT6), (mm) Unless Specified Otherwise									
NOM. DIMENSION	0 TO 10	10 TO 16	16 TO 25	25 TO 40	40 TO 63	63 TO 100	100 TO 160	160 TO 250	250 TO 400
TOLERANCE	±0.26	±0.27	±0.29	±0.32	±0.35	±0.39	±0.44	±0.50	±0.55
ANGLE TOLERANCE: ±0.5°									



**ASSEMBLY DRAWING - DOC & PIN - DP5021TN**  
**STELLA GLASS HARDWARE - eCOMMERCE**

SCALE	1:1
SKETCH NO.	
DP5021TN	

UNIT 105-8218 NORTH FRASER WAY, BURNABY, BC, V3N 0E9  
 TEL (604) 231 5892  
[WWW.STELLAGLASSHARDWARE.COM](http://WWW.STELLAGLASSHARDWARE.COM)