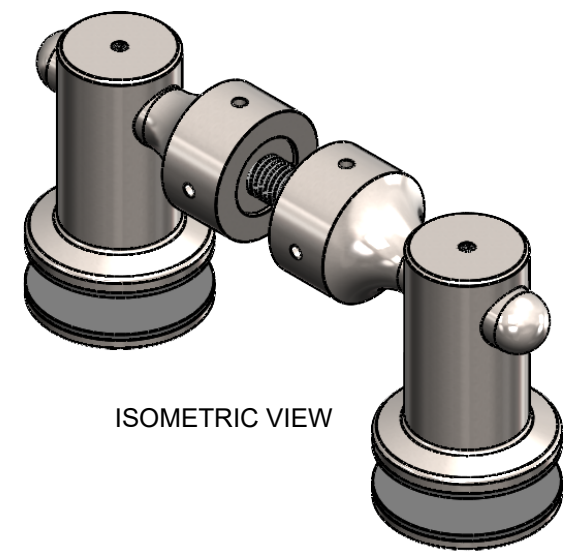
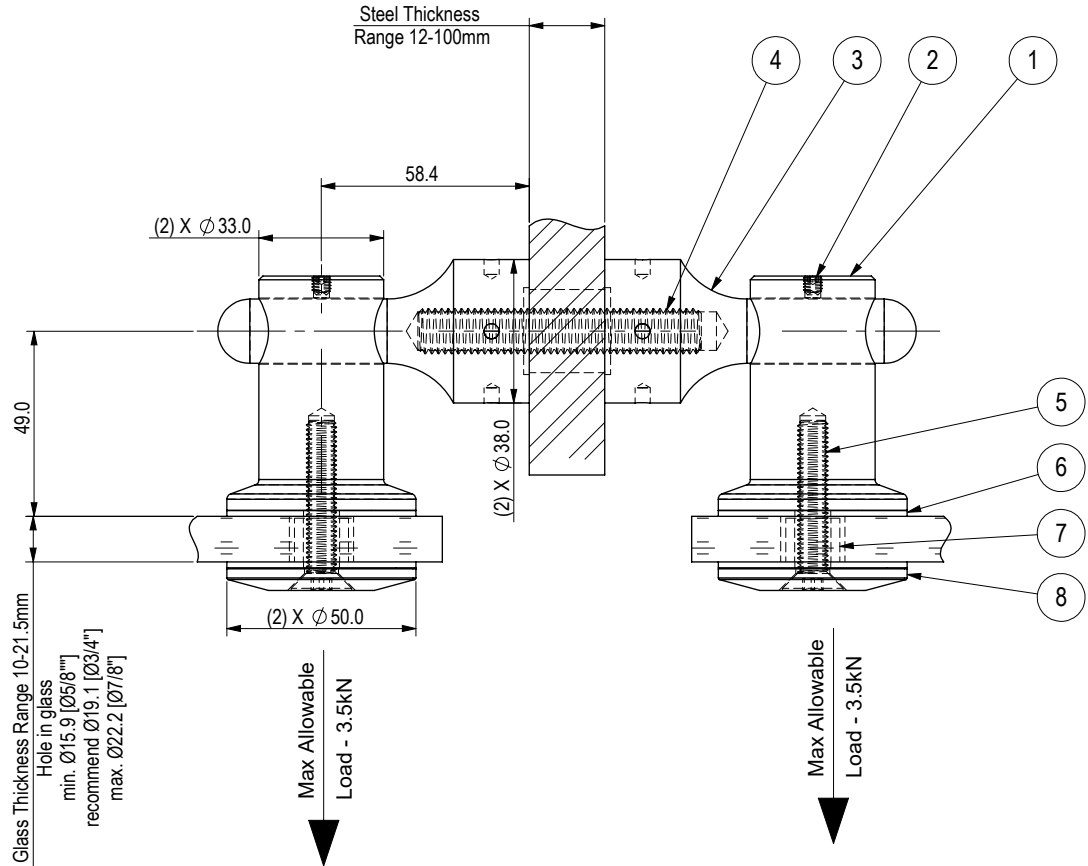


REV.	DATE	DESCRIPTION	DARWN BY	CHECKED BY
0	2021-11-08	INITIAL RELEASE - eCOMMERCE	VK	KW

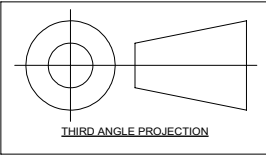
ITEM	PART	DESCRIPTION	MATERIAL	FINISH	QTY.
1	DP9-P02	DOC CONNECTOR	Gd 316 SS	MACHINED	2
2	SSS M5x5	SET SCREW-HEX SOCKET- M5 X 5	A2-70	EX WORKS	2
3	DP2-P01	PIN CONNECTOR	Gd 316 SS	MACHINED	2
4	St M12	STUD M12 (LENGTH VARIES)	A2-70	EX WROKS	1
5	FHCS M8x45	FLAT HEAD SOCKET CAP SCREW, M8 X 45 Lg.	A2-70	EX WORKS	2
6	NB1-P03	GASKET-1/16" THK.	CG608-FIBER-GREY	EX WORKS	4
7	NB4-P05a	FERRULE	NYLON BLACK	MACHINED	2
8	NB1-P01	Dia 50 FRONT PLATE	Gd 316 SS	MACHINED	2



ISOMETRIC VIEW

Glass Thickness Range 10-21.5mm
 Hole in glass
 min. Ø15.9 [Ø5/8"]
 recommend Ø19.1 [Ø3/4"]
 max. Ø22.2 [Ø7/8"]

General Tolerances (ISO 8062-CT6). (mm) Unless Specified Otherwise									
NOM. DIMENSION	0 TO 10	10 TO 16	16 TO 25	25 TO 40	40 TO 63	63 TO 100	100 TO 160	160 TO 250	250 TO 400
TOLERANCE	±0.26	±0.27	±0.29	±0.32	±0.35	±0.39	±0.44	±0.50	±0.55
ANGLE TOLERANCE: ±0.5°									



- NOTES:**
- All dimensions are in millimeters unless otherwise specified.
 - Loctite Type 243 all threads during site installation (B.O.)
 (To increase curing speed, please apply activator 7649)

ASSEMBLY DRAWING - DOC & PIN - DP5022T0
STELLA GLASS HARDWARE - eCOMMERCE

SCALE	1:2
SKETCH NO.	
DP5022T0	



UNIT 105-8218 NORTH FRASER WAY, BURNABY, BC, V3N 0E9
 TEL (604) 231 5892
 WWW.STELLAGLASSHARDWARE.COM