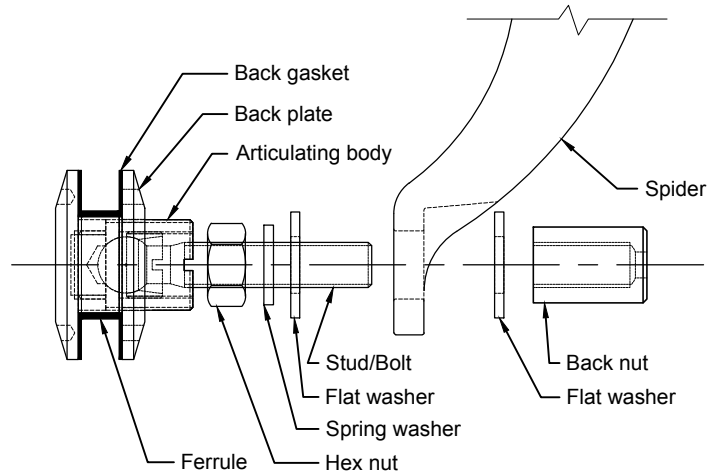
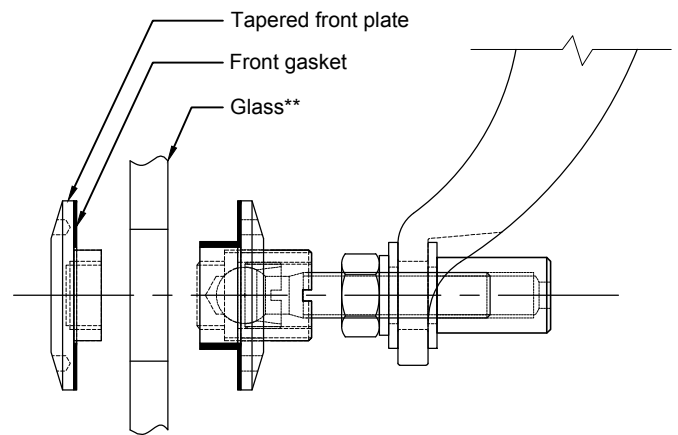


INSTALLING THE BOLT TO SPIDER

- Step 1** Unscrew back nut from bolt, leave one flat washer and hex nut on the stud/bolt.
- Step 2** Place stud/bolt in spider.
- Step 3** Place washers that you removed in Step One back on bolt in this order: flat washer, spring washer, machined back nut.



- Step 4** Tighten the bolt connection around spider. Please note that hex nut and back nut can be adjusted to move bolt in and out - depending on plane that you wish bolt to sit on.
- Step 5** Remove front plate of glass bolt and black front gasket.
- Step 6** If you have templated glass, place it now OR template glass at this point.

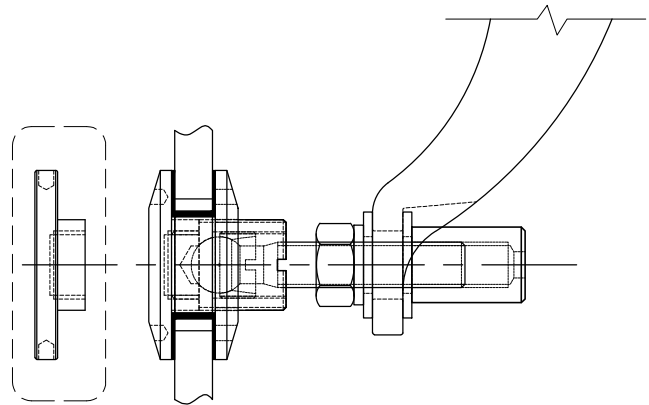


- Step 7** Place black front gasket and front cap back on glass bolt and tighten with Stella-supplied 4mm pin spanner. Ensure no contact of glass to metal.

NOTE: Should you still need in and out adjustment - it's not too late!

To move glass outward, loosen the back nut and tighten the hex nut.

To move glass inward, loosen the hex nut and tighten the back nut.



****Hole in Glass:**

Minimum: $\text{Ø}31.8\text{mm}$ [$\text{Ø}1\frac{1}{4}"$]

Recommend: $\text{Ø}34.9\text{mm}$ [$\text{Ø}1\frac{3}{8}"$]

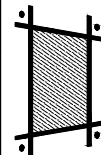
Maximum: $\text{Ø}38.1\text{mm}$ [$\text{Ø}1\frac{1}{2}"$]

Rev.	Date	Description	Drawn by	Checked by
1	Feb 06-2020	Revised format	MT	JS

Disclaimer:
These instructions provide guidance for installation only. They do not constitute suitability for application, which should be provided by a registered Engineer.

Hole in glass: See above
Dimensions millimeter unless otherwise shown.
Apply loctite 243 to all threads during assembly (To increase curing speed, please apply activator 7649)

Drawn	Drawn date
NY	16 MAY 2014
Checked	Checked date
BL	25 MAY 2014
Scale	Rev.
1:2	1
DWG No	
AB502T-IM	



stella

[t] (604) 231 5892

[f] (604) 231 5893

[e] info@stellaglasshardware.com

INSTALLATION INSTRUCTION
ARTICULATING BOLT WITH SPIDER
AB502T (FLAT OR TAPERED)