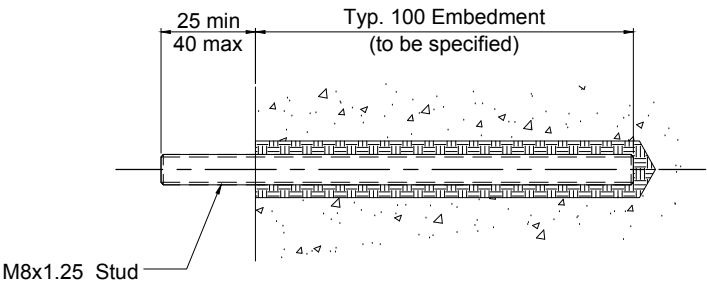


INSTALLING THE REDI ROD

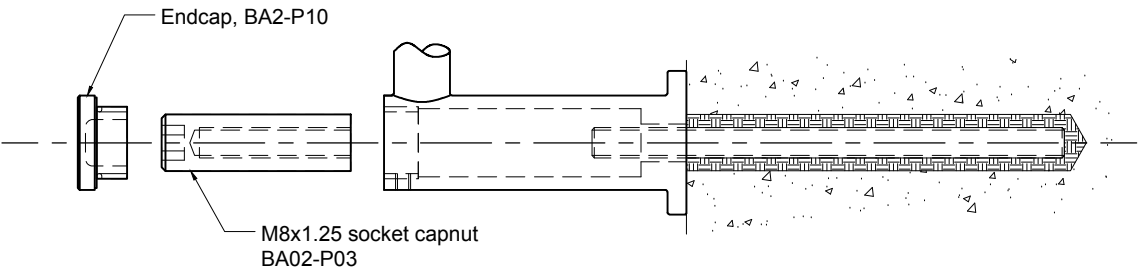
Pre-drill hole into concrete structure.  
(Drill bit and hole depth to be determined by Engineer.)

Embed M8 redi rod into concrete structure to the correct embedment depth  
(Typical 4" embed).



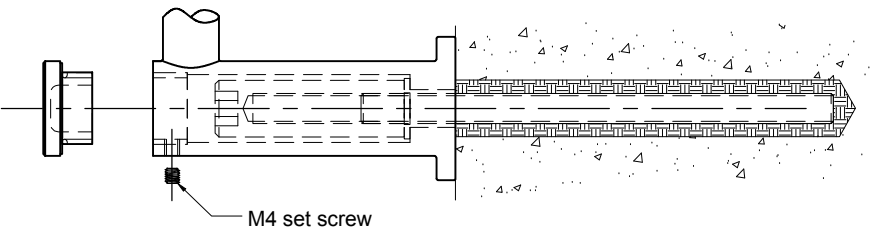
INSTALLING HANDRAIL FITTING

Remove the endcap BA2-P10. Secure handrail fitting with the socket capnut using a 8mm Allen key.  
(Same Allen key as for 3/8"-16 socket cap screw).



CLOSE FITTING

Turn endcap BA2-P10 back into the front of the fitting. Tighten the M4 set screw at the bottom to secure the cap.



**Disclaimer:**  
These instructions provide guidance for installation only.  
They do not constitute suitability for application, which  
should be provided by a registered Engineer.

**Hole in glass:** See above  
Dimensions millimeter unless otherwise shown. Apply loctite 243 to all threads  
during assembly (To increase curing speed, please apply activator 7649)

Drawn	Drawn date
MT	JUL 08-2020
Approved	Approved date
JS	JUL 08-2020
Scale	Rev.
1:2	-
DWG No	
BA382-D-IM	

INSTALLATION INSTRUCTION  
HANDRAIL FITTING WALL MOUNTED TO CONCRETE  
BA382-D

**stella**

[t] (604) 231 5892  
[f] (604) 231 5893  
[e] info@stellaglasshardware.com