

TEST REPORT

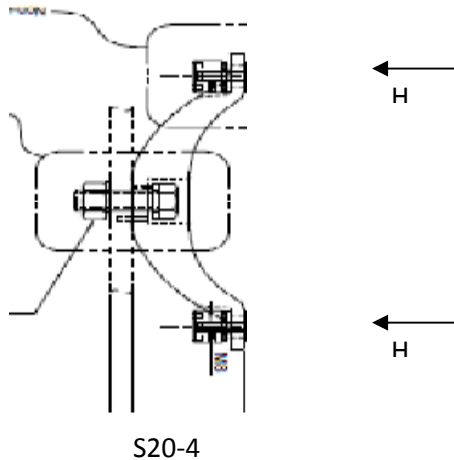
Tested by: Ricky Lo, BAsC. – Materials Engineering

Testing Location: Powertech Labs Inc.

Part: S20-4 – Face Mounted Spider

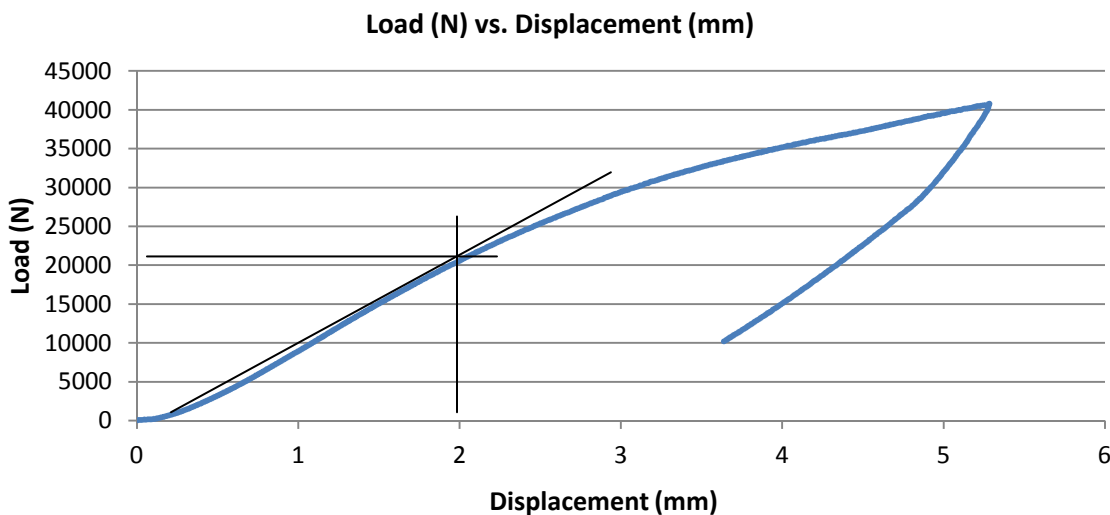
Test Setup:

The spider is tested with a horizontal load applied on all 4 arms, which represents wind load in a wall application, or snow load in a canopy.



Test setup

Test Results:



Conclusion/ Observations:

The spider was tested to a load of 40 kN max (10 kN/arm) at which point it had yielded, but was not broken.

The data curve shows first sign of yield occurring around 20 kN (5 kN/arm) and again at 30 kN (7.5 kN/arm) (different location on the arm).

Signs of yield are only faintly visible on the back face of the legs near the center mount.

