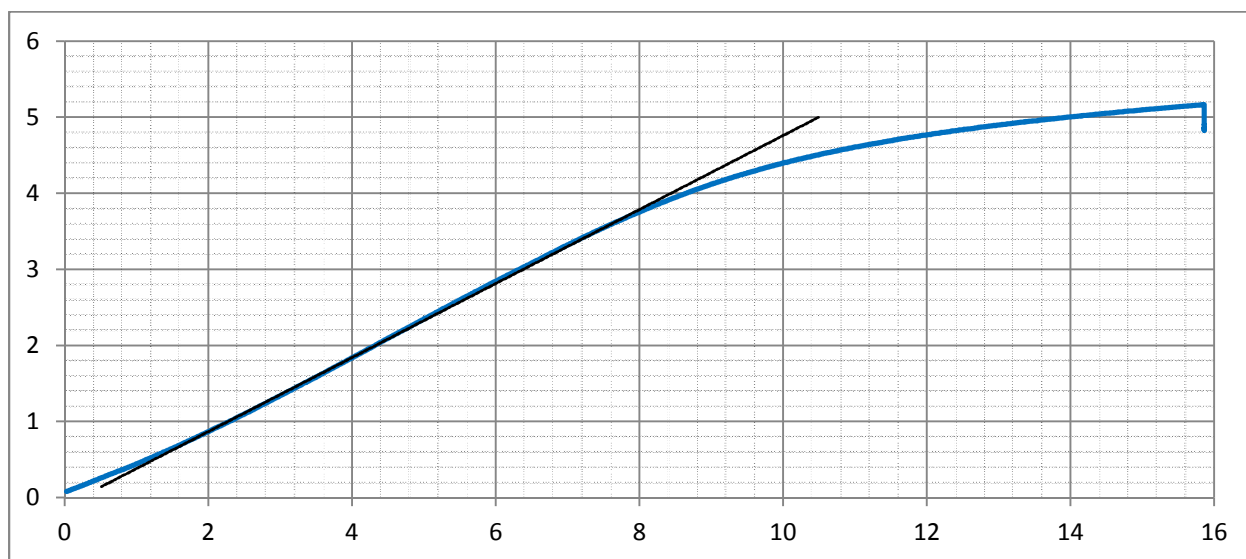
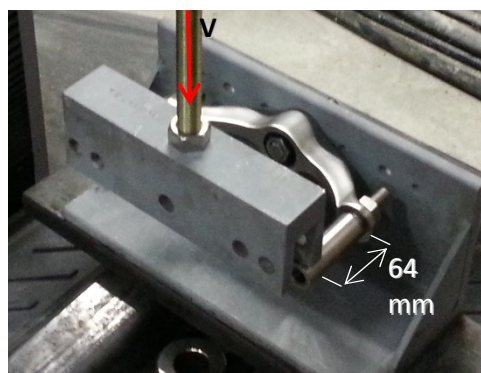


# TEST REPORT

**Tested by:** Steve Epp.  
**Testing Location:** Powertech Labs Inc.  
**Part:** S202FT – Two Arm Spider (Gd 316 Stainless steel)

## Test Setup:

The spider is tested with a vertical load applied on the 2 arms, which represents dead load in a wall application. The test load is applied 64 mm from the face of the spider arm to simulate an articulating bolt.



## Conclusions / Observations:

The two arm spider was tested to 5.2 kN (2.6 kN per arm).  
 Yield begins at 3.8 kN (1.9 kN per arm) near the end of the arms.  
 Upon disassembling the test equipment yielding is visible on the mounting base of the spider under compression.

